



**BUILDING...**  
**WE HAVE BUILT US EVERYDAY**

# General Information



**Name:** IBIDEM CONSTRUCCIONES S.A. DE C.V.

**R.F.C:** ICO-950109-EN1

**Reg. Infonavit:** 160369045

**Reg. IMSS:** C89-41783-10

**Charter:** 773 tome 27

**Modification of the charter:** 773 tome 28

**Modification of the charter:** 5375 VOL. 123

**Constitution place:** Morelia, Michoacán

**Business plan:** CHIPS

**Integration:** Ing. Jorge Castro Jaimes

# General Operative System



## Central Administration

- Budgeting
- Charge control of estimates
- Materials supply
- General spending control
- Control of suppliers
- Planning of payments
- Payment of payrolls
- Control of workers insurance



## Field Administration

- Supervision and programming of the work
- Administration of the work staff
- Quantification of work
- Making of generators
- Work advances
- Control of subcontracts
- Control of piecework
- Minor material supply
- Control of petty cash
- Supplies given by the owner



## Team Administration

- Services and maintenance
- Oils
- Work hours
- Control of the operators
- Insurances
- Tools
- Freight



# Organization Chart





### **Vision.**

Our vision is being a big enterprise and of excellence, leader in the construction industry, looking for the common good for its clients and workers through a fair treatment.

### **Mission.**

Get the client satisfaction building on time, costs and quality, counting for that with tools, equipment, and trained personnel.

### **Philosophy.**

We know that the functionality is not detached to the beauty and in this vision is imponderable the quality giving us as result the possibility of satisfy in all senses the likes and expectations of our clients.



In IBIDEM CONSTRUCCIONES we have assumed the challenge of grow in a permanent way until we turn into an enterprise developer of infrastructure and construction, with a vision and a mission well defined and stable through the time. Supported in values such as:

Honesty  
Loyalty  
Respect  
Solidarity  
Responsibility

Our Objectives:

Improve day by day the satisfaction of the client.  
Increase permanently the trust and satisfaction of our clients.  
Assure the client the quality of our services.

Improve the team work from and to IBIDEM CONSTRUCCIONES.

Accept the regulatory requirements that our clients request us, since in IBIDEM CONSTRUCCIONES; we are an enterprise socially responsible

\*

# Our Business Plan



Trading



Habitationnal



Industrial



Pavements



Services



# Trading



In IBIDEM Co. we define this work as the place or space dedicated to the exchange of products or services, and these products can be:

Malls

Auto service stores

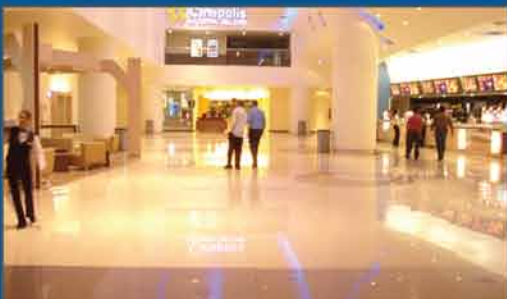
Gas stations

Stores and grocery warehouses

Car dealerships



# Trading





# Trading



# Habitational



When we talk about habitational constructions we just don't refer to the construction of habitational houses, we refer to the whole concept of it, and which is also understood as habitational developments, at condos which can be vertical or horizontal, divisions of houses, habitational units, etc.

In this ambit is common that the likes and expectations of each client are different so it is objective of the enterprise guarantee the satisfaction of the client and for this we get involved since the beginning in their projects, and in their vision bringing them closer our experience and knowledge with people very well trained

.



# Habitational



# Habitational





# Industrial



Every industry requires a place, which satisfied its requirements and quality standards; this involves the development of projects with a high technical content and the development of cutting edge engineering, that can be seen in the high productivity of the products and services that are made in that place. In this type of works we can include food processing factories, refineries, of chemical products, communication, computation, storage and others.



# Industrial





# Industrial



# Pavements



There are two types of pavements in the construction: the flexible (asphalt and pavers) and the rigid (of hydraulic concrete). The last ones are the type of pavements in which we are specialized.

The hydraulic concrete is the most used construction material, because of its versatility, durability, and economy.

The concrete is used in highways, streets, sidewalks, parking lots, bridges, high buildings, houses, industrial warehouses, and lots of more applications

.



# Pavements

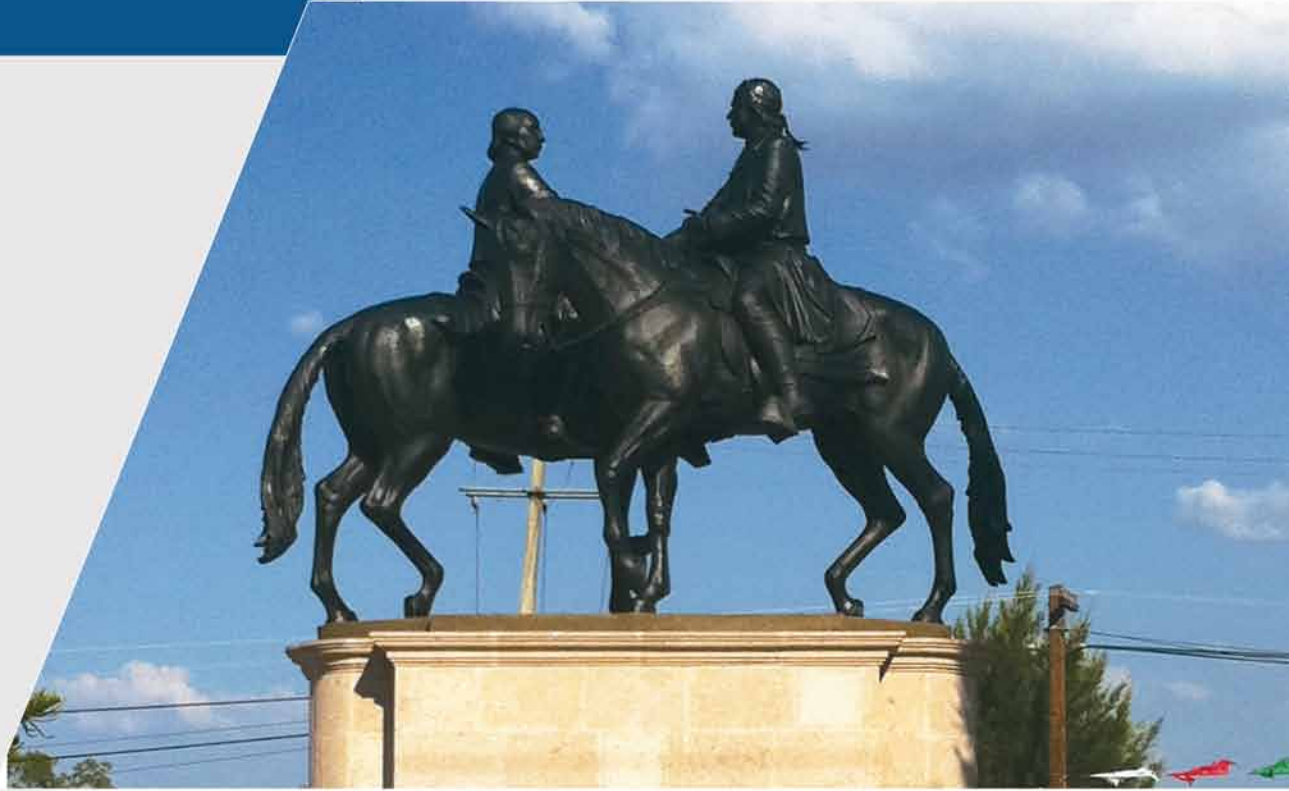




# Pavements



# Services

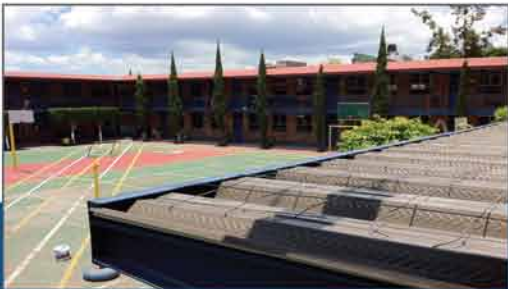


We call to every construction which brings a common good to the society, and this are churches, schools, hospitals, markets, sport units, civic squares and a lot more.

In IBIDEM Co. we have specialized in the construction of Mormon churches since is one of our principal clients and with whom we have a relation of work of a bit more than 17 years, building them in the whole country.



# Services



# Services







IBIDEM CONSTRUCCIONES S.A. DE C.V. is an enterprise made by man and women committed to always offer the maximum quality, objective that motivates our daily effort.

### The Challenge

IBIDEM Co. looks to consolidate itself as a competitive enterprise in a national level, looking for the leadership in the market with its products made in the highest quality, keeping close to it the economic aspect, making stronger our labor to make step by step, the IBIDEM of tomorrow with the eye focused in a better future.